

SYSTEM OF ENSURING COMPLIANCES AND REPORTING OF NON-COMPLIANCE/ VIOLATION OF ENVIRONMENTAL NORMS

At all units of Jaypee Cement, the **Environment Management Cell (EMC)**, headed by Vice President / General Manager and supported by a well-equipped Environmental Monitoring Laboratory is having qualified & well experienced team of Environmental Engineers / Scientists. EMC is responsible for the day to day activities related to the monitoring of environmental parameters, compliances of general and specific conditions of Environmental Clearance, maintaining records, data compilation and analysis, obtaining consents, authorization and other statutory permissions of Hazardous Wastes, ground water withdrawal etc. Any non-compliance / violation of the environment norms are immediately reported to the unit Head, who is directly responsible to the compliances as per the law.

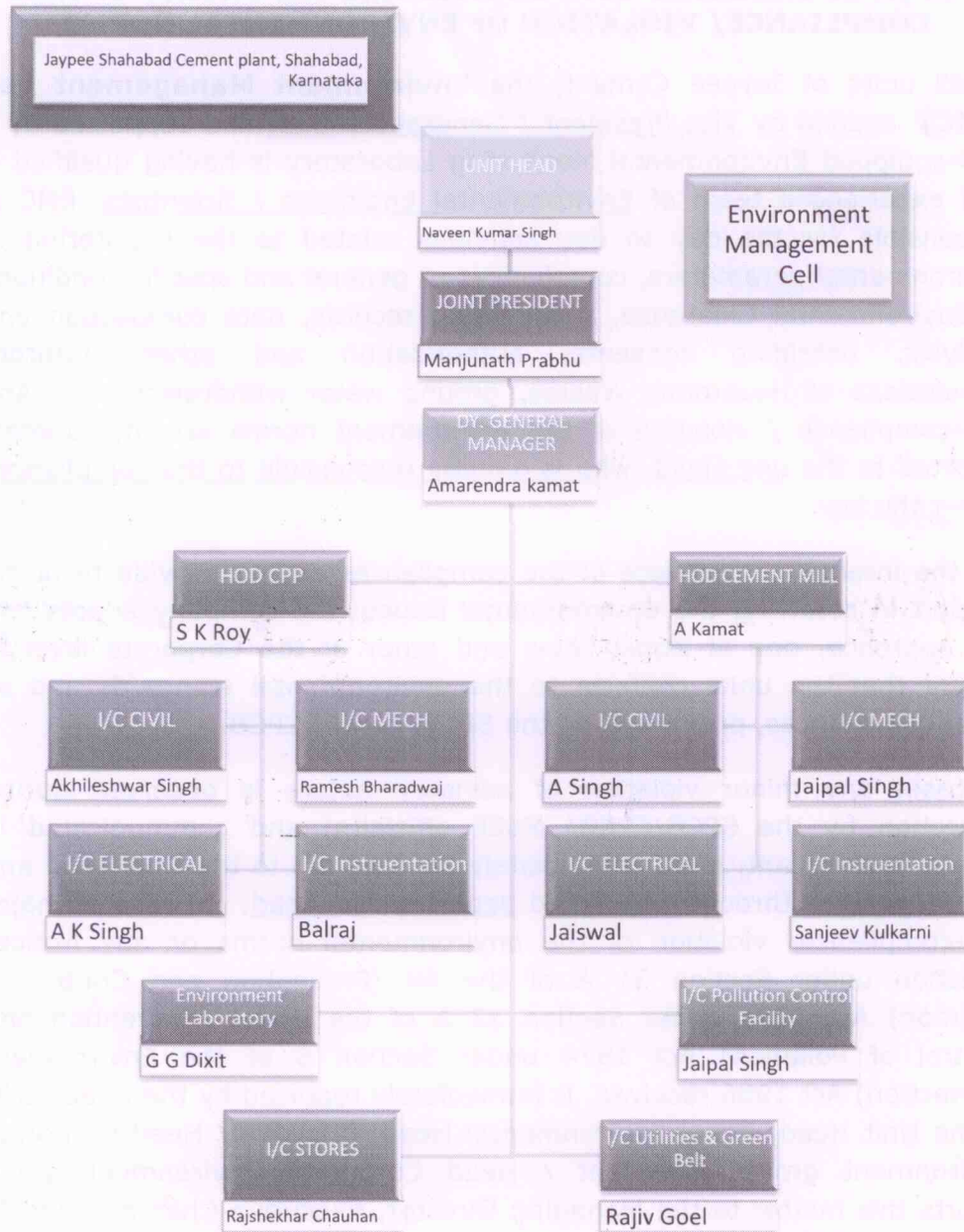
For the internal surveillance of the compliances and to provide technical support in resolving the environmental issues, the company adopts two tier approach, one at Zonal Level and other at the Corporate level to ensure that the units conform to the environmental standards and all other compliances, prescribed by the SPCB/ MoEF/ CPCB.

In case, any minor violation of advisory nature is observed during inspection by the SPCB/CPCB/ MoEF official(s) and communicated in writing to the plant, it will immediately be reported to the Unit Head and will be rectified through concerned departmental head. In case of major non-compliance/ violation of the environmental norms or any Notice/ Direction under Section 31 A of the Air (Prevention and Control of Pollution) Act 1981 under Section 33 A of the Water (Prevention and Control of Pollution) Act 1974 under Section 5 of the Environment (Protection) Act 1986 received, is immediately reported by the Head, EMC to the Unit Head, Zonal Environmental Head, President/ Head Corporate Environment group. President / Head Corporate Environment group reports this matter to the Managing Director, Executive Chairman and to the Board of Directors of the Company. He is fully responsible for the implementation of all the decisions of the Board, related to the statutory compliances to the environmental regulation and overall improvement of the green image of corporate environment.



Jaypee cement Corporation Limited
Shahabad

Annexure - 1



Handwritten signature

Handwritten signature

Jaypee cement Corporation Limited

Shahabad

Annexure - 2

ECO DEVELOPMENT MEASURES TAKEN BY JP SHAHABAD CEMENT PLANT

Jaypee group believes that harmony between the man and his environment is the prime essence of healthy life and living. The sustenance of our ecological balance is therefore of paramount importance. The Group recognizes its joint responsibility with the Government and the Citizens to protect and preserve the environment.

Practicing the principle of "Inclusive Growth", following eco-development measures are being implemented at various stages of implementation

1. SOIL CONSERVATION

Entire cement plant has been constructed on infertile land outside the reserved forest. For construction of plant and facilities in no case top fertile soil has been scarified. Rocky terrain had been leveled off for foundations for P& M, Offices & Buildings without any extraneous matter, with the help of excavator /grader only.

2. GREEN BELT DEVELOPMENT.

The Company is raising plantation in an area of 45 acre in plant boundary area in a phased manner which is 34% of the total land belonging to the project. Plantation is being developed in following manner:

Sl.No.	Form of Plantation	Description
i	Strip plantation	All around the project boundary 3 rows of saplings is being planted to form a greenbelt, Preference is being given to fast growing species including locally dominant species such as Teak, Dubai, Neem, Shirsh, Chiddi, Amla, Sitafal, Jamun, Badam, etc.
ii	Avenue plantation	Parks of township, admin. Building, temple area, either side of internal roads
iii	Block plantation	Waste lands around facilities being developed

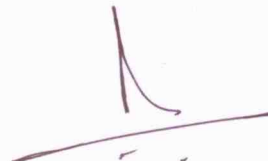
Greenbelt development in the form of above described manner will serve following purposes:

- Increase in fresh Oxygen supply and
- Acting as carbon sink thereby combating global warming through reduction in CO₂ emissions.
- Improving microclimate, contributing to cooling effect and improve green cover in the surrounding areas improving QOL (Quality of Life) with increase in lung space and promoting healthy lifestyle.

Additionally these tree groves will reduce soil erosion, help in enhancing groundwater recharge and create a sound barrier between plant and surrounding areas.

3. WATER CONSERVATION

To put least thrust on natural sources of Water, Company is adopting best possible approaches to conserve water, which can be witnessed as:



Jaypee cement Corporation Limited
Shahabad

Annexure - 2

- i. Construction of STP to maintain **Zero Waste Water Discharge**- all type of treated water will be utilized for specific purposes like plantation, dust suppression etc.
- ii. Installation of air cooled condenser for CPP, in place of conventional large size Cooling towers.
- iii. Implementation of Rain water harvesting proposed for Township & Plant area.

4. SOLID WASTE MANAGEMENT

Following strategy is being implemented to handle solid waste of all kinds either it may be hazardous or non-hazardous:

- Practicing principle of 2 'R's i.e. Reduce & Reuse
- All the waste will be segregated on the basis on degradability/recyclability, than accordingly they will be disposed. Bio degradable waste from township & plant area will be composted and the manure will be used for horticulture purpose.
- All the hazardous waste will be disposed through the authorized recyclers.
- Maximum possible utilization of Fly ash in production of PPC.

5. USE OF ALTERNATIVE FUEL

- Provision is made for use of PET Coke in the Cement Production, which is otherwise waste end product for refineries
- Provision of combustion of hazardous waste in the kiln design

6. ENERGY CONSERVATION

- Use of CFL in all building and offices
- Installation energy star rated ACs for offices and load centers
- Use of VFD in place of conventional one
- 6-stage pre heater itself is energy saving effort
- Utilization of hot air gases released from kiln
- Installation of VRMs for cement grinding, raw mill & coal mill

7. SOCIO-ECONOMIC BENEFITS

A Development of any kind is said to be biased, if its benefits doesn't passes to rock bottom strata of the society. In this regard JBCP has contributed in following manner:

- Indirect employment to entrepreneurs
- Direct employment to local residents
- Growth of local market in terms of consumables(Domestic & Industrial)
- Fulfilling CSR& commitment made during public hearing.
- Preference to local people for employment.
- Rise in living standards

Ant

[Signature]

14/6/17